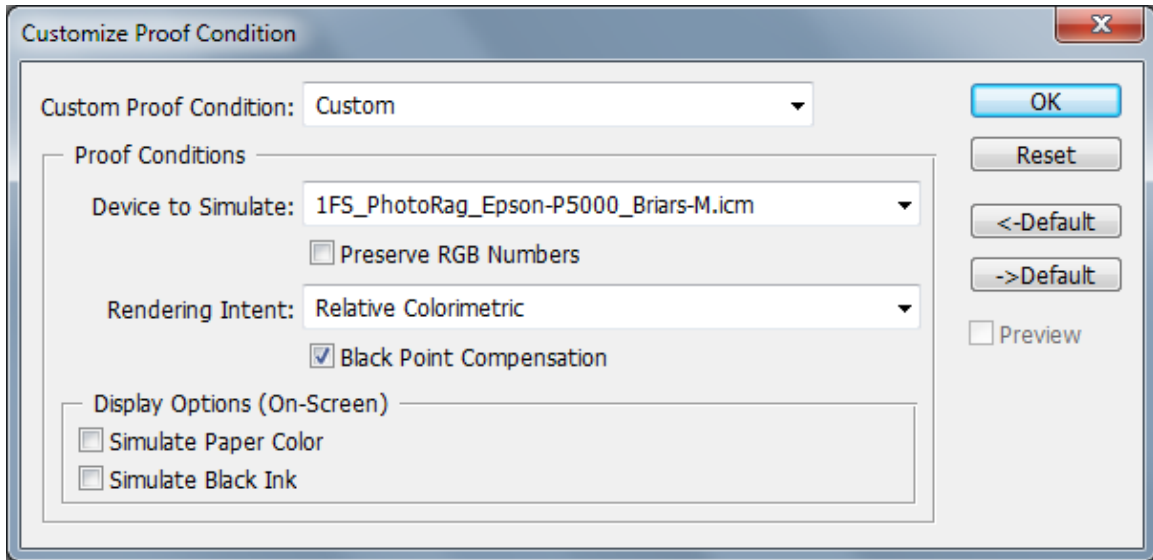


Installation Instructions for Softproof editing

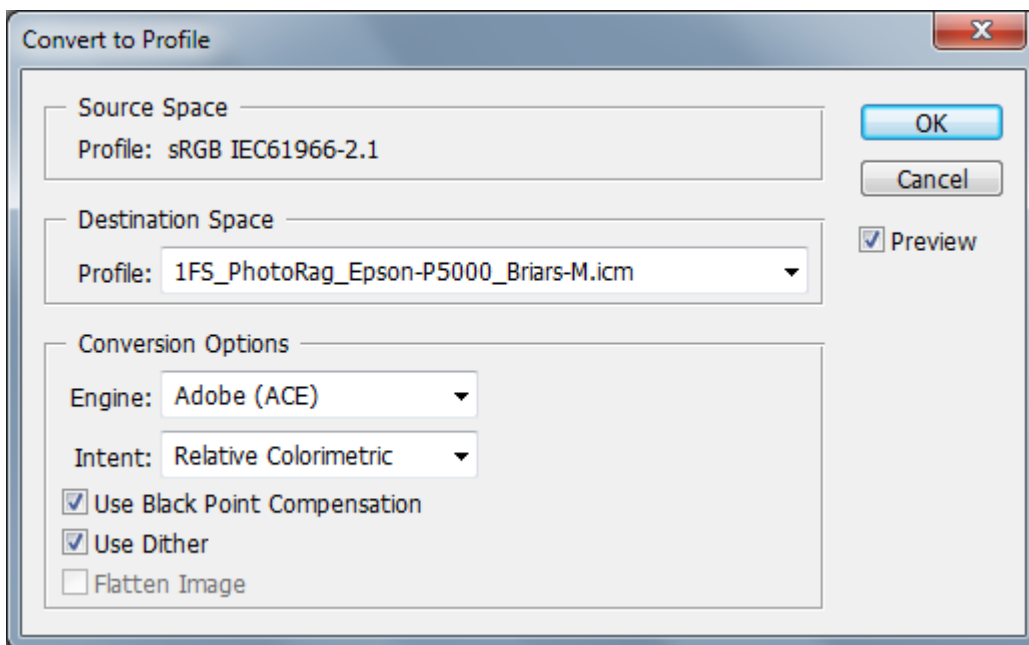
1. Download the ICC profile.
2. Find the downloaded profile and right click and choose 'install profile' or manually copy file into the correct folder on your computer.

PC: Windows/System32/spool/drivers/color

Mac: ColorSync folder



3. Open image in Photoshop and go to "View/Proof Setup/Custom" and choose IFS_PhotoRag_Epson-P5000_Briars-M.icm profile .
4. Make sure rendering intent is set to "Relative Colorimetric", "Black Point Compensation" box is ticked and the "Preserve RGB Numbers" box is **unticked**.
5. Edit image as you wish and flatten layers once complete.



6. Embed the profile from the menu bar by clicking the "convert to Profile" option in the edit or image menus. The same profile used in the soft proofing should appear in the "Destination Space" dialog box.
7. "Save As" making sure the correct color profile box is ticked.